

# **\$624,900 - 20 Beardsley Crescent, Lacombe**

MLS® #A2233429

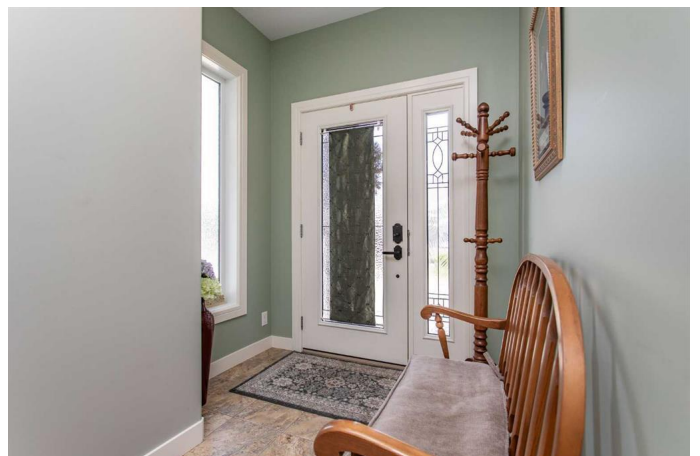
**\$624,900**

4 Bedroom, 3.00 Bathroom, 1,329 sqft

Residential on 0.00 Acres

College Heights, Lacombe, Alberta

This stunning bungalow has so much to offer and has plenty of custom upgrades that you will appreciate. You are welcomed by the large tiled entry way that leads to the open concept main living area. The kitchen offers granite counter tops, extra undermount lighting on the top & bottom of cupboards, & bar seating at the counter. High 12' ceilings help bring in the natural light and the large picture window looks out to views of Henner's pond and the green space in the back yard. The gas fireplace and reclaimed wood mantle add extra warmth to the living room. A door leading to the oversized composite deck extends the living area to the outside. The main floor primary bedroom creates an oasis with a walk-in closet, double doors providing access to the deck, and a five piece ensuite with air jet tub, double vanity with cupboard towers, and extra lighting. Completing the main floor is the office/den by the front entry with custom closet shelving, a two piece bath with granite countertops & upgraded fixtures, and laundry room with granite countertops, sink, and extra storage with floor to ceiling cabinets. The walk-out basement will continue to impress with a wet bar with dishwasher & full size fridge and doorway to the oversized aggregate patio. The media room/family room provides additional space for evenings and home and underfloor heat makes the basement even cozier. There are two more bedrooms in the basement, a four piece bath, storage room, & large utility room completing the basement.



The double attached garage offers additional storage space and an extended landing deck. A true gem of this property is the views to Henner's Pond from both upstairs & downstairs and the oversized deck & patio in which to enjoy the outdoors without all the yard work.

Built in 2016

### **Essential Information**

MLS® #	A2233429
Price	\$624,900
Bedrooms	4
Bathrooms	3.00
Full Baths	2
Half Baths	1
Square Footage	1,329
Acres	0.00
Year Built	2016
Type	Residential
Sub-Type	Semi Detached
Style	Bungalow, Side by Side
Status	Active

### **Community Information**

Address	20 Beardsley Crescent
Subdivision	College Heights
City	Lacombe
County	Lacombe
Province	Alberta
Postal Code	T4L 0G4

### **Amenities**

Amenities	None
Parking Spaces	2
Parking	Double Garage Attached
# of Garages	2

### **Interior**

Interior Features	Bar, Ceiling Fan(s), Central Vacuum, Granite Counters, High Ceilings, Open Floorplan, Pantry, Walk-In Closet(s), Jetted Tub
Appliances	Dryer, Garage Control(s), Microwave, Refrigerator, Stove(s), Washer
Heating	Forced Air, In Floor
Cooling	Central Air
Fireplace	Yes
# of Fireplaces	1
Fireplaces	Gas, Living Room
Has Basement	Yes
Basement	Finished, Full, Walk-Out

## Exterior

Exterior Features	BBQ gas line
Lot Description	Backs on to Park/Green Space
Roof	Asphalt Shingle
Construction	Wood Frame
Foundation	Poured Concrete

## Additional Information

Date Listed	June 20th, 2025
Days on Market	60
Zoning	R4

## Listing Details

Listing Office	RE/MAX real estate central alberta
----------------	------------------------------------

Data is supplied by Pillar 9â„¢ MLS® System. Pillar 9â„¢ is the owner of the copyright in its MLS® System. Data is deemed reliable but is not guaranteed accurate by Pillar 9â„¢. The trademarks MLS®, Multiple Listing Service® and the associated logos are owned by The Canadian Real Estate Association (CREA) and identify the quality of services provided by real estate professionals who are members of CREA. Used under license.