

\$980,000 - 39321 Range Road 273, Rural Lacombe County

MLS® #A2233388

\$980,000

4 Bedroom, 3.00 Bathroom, 1,240 sqft
Residential on 18.36 Acres

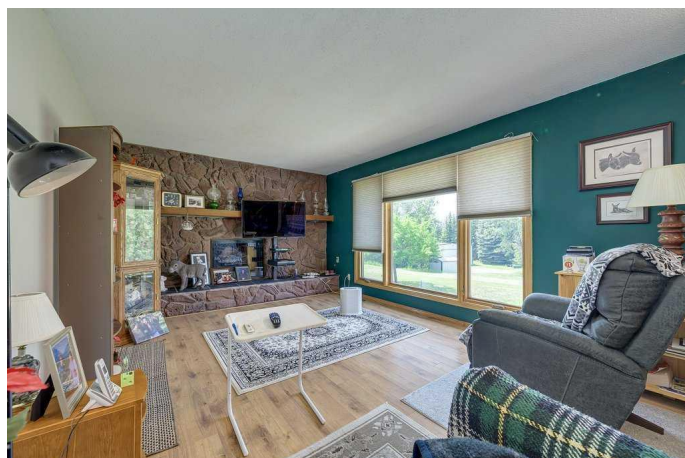
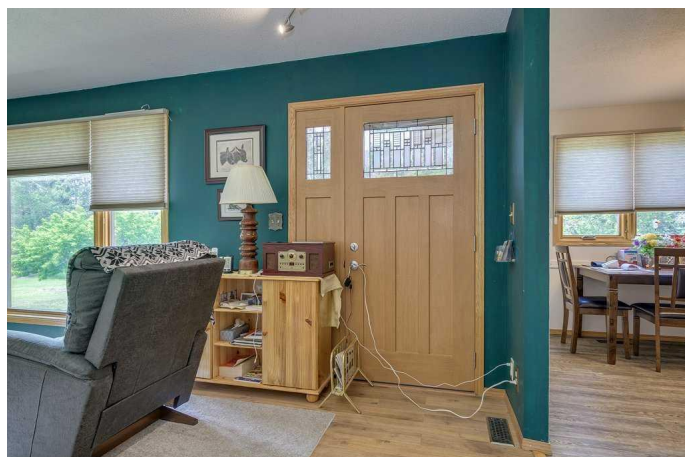
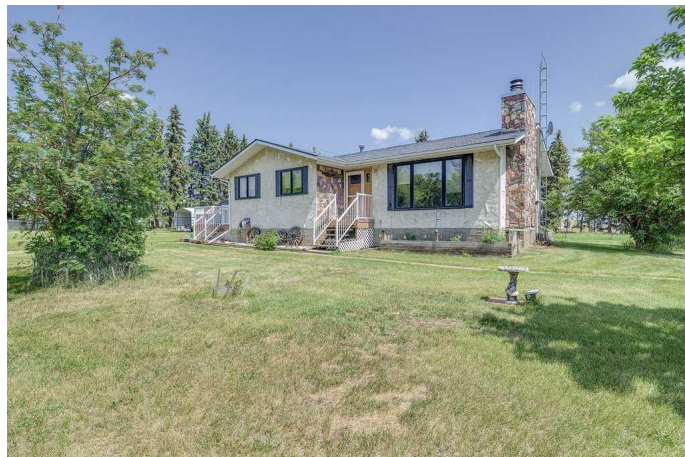
NONE, Rural Lacombe County, Alberta

Great opportunity to own a beautiful acreage minutes to both Red Deer and Blackfalds. 18.51 acres with a 1240 sq ft bungalow, detached double garage and large shop. The home is nestled in privacy on the property. With 3 bedrooms on the main floor and a 4th one in the lower level, lots of room for everyone. Air conditioning will keep you cool in the summer and the new wood burning pellet stove will keep you warm in the winter. There is a backup generator in place for the circumstance of power loss, to keep the essentials running. Large shop to hold all of the equipment and space to work.

Built in 1978

Essential Information

MLS® #	A2233388
Price	\$980,000
Bedrooms	4
Bathrooms	3.00
Full Baths	2
Half Baths	1
Square Footage	1,240
Acres	18.36
Year Built	1978
Type	Residential
Sub-Type	Detached



Style	Bungalow, Acreage with Residence
Status	Active

Community Information

Address	39321 Range Road 273
Subdivision	NONE
City	Rural Lacombe County
County	Lacombe County
Province	Alberta
Postal Code	T0M 0J0

Amenities

Parking	Double Garage Detached
# of Garages	2

Interior

Interior Features	Vinyl Windows, Laminate Counters
Appliances	Central Air Conditioner, Dishwasher, Microwave, Refrigerator, Stove(s), Window Coverings
Heating	Forced Air, Natural Gas
Cooling	Central Air
Fireplace	Yes
# of Fireplaces	1
Fireplaces	Basement, Wood Burning, Pellet Stove
Has Basement	Yes
Basement	Finished, Full

Exterior

Exterior Features	Private Yard
Lot Description	Many Trees, Treed, Brush, Fruit Trees/Shrub(s), Wooded
Roof	Asphalt Shingle
Construction	Stucco, Wood Frame
Foundation	Poured Concrete

Additional Information

Date Listed	June 21st, 2025
Days on Market	58
Zoning	1

Listing Details

Listing Office

Royal LePage Network Realty Corp.

Data is supplied by Pillar 9â„¢ MLSÂ® System. Pillar 9â„¢ is the owner of the copyright in its MLSÂ® System. Data is deemed reliable but is not guaranteed accurate by Pillar 9â„¢. The trademarks MLSÂ®, Multiple Listing ServiceÂ® and the associated logos are owned by The Canadian Real Estate Association (CREA) and identify the quality of services provided by real estate professionals who are members of CREA. Used under license.