

\$468,900 - 29 Portway Close, Blackfalds

MLS® #A2232095

\$468,900

3 Bedroom, 2.00 Bathroom, 1,506 sqft

Residential on 0.09 Acres

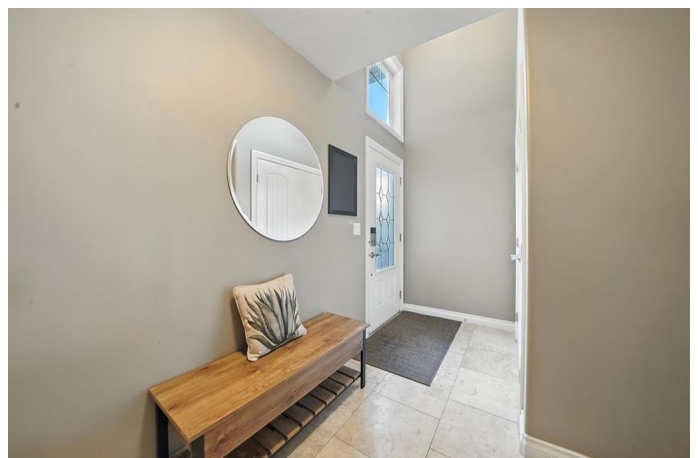
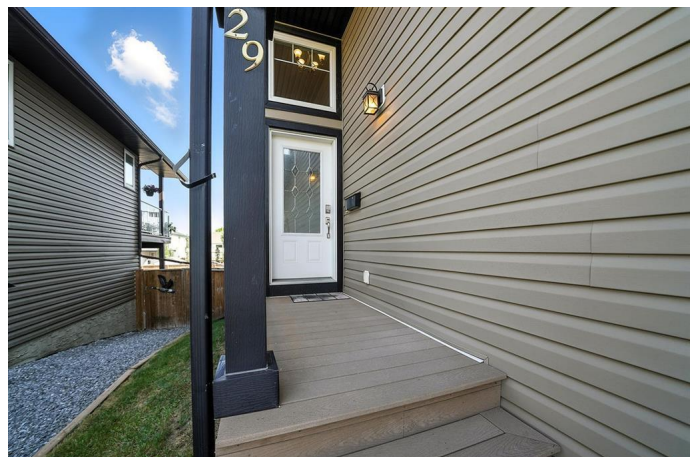
Pinnacle, Blackfalds, Alberta

Nestled in the desirable community of Pinnacle Estates, this beautifully designed modified bi-level property offers timeless style and thoughtful upgrades throughout. Set on a quiet street, this home features 3 spacious bedrooms and 2 full bathrooms, and an inviting floor plan perfect for everyday living and entertaining. The kitchen showcases rich maple cabinets, granite countertops, and gleaming hardwood floors all tied together with vaulted ceilings that extend throughout the main living space-including the master bedroom! The primary suite, on its own level, features a walk-in closet and a luxurious 5-piece ensuite, creating a true spa like retreat. Main floor laundry adds convenience, while the walkout basement-with framing already completed-offers endless potential and ease of future development. Take advantage of this beautiful find in Pinnacle Estates before it's gone!

Built in 2013

Essential Information

MLS® #	A2232095
Price	\$468,900
Bedrooms	3
Bathrooms	2.00
Full Baths	2



Square Footage	1,506
Acres	0.09
Year Built	2013
Type	Residential
Sub-Type	Detached
Style	Modified Bi-Level
Status	Active

Community Information

Address	29 Portway Close
Subdivision	Pinnacle
City	Blackfalds
County	Lacombe County
Province	Alberta
Postal Code	T4M 0G8

Amenities

Parking Spaces	4
Parking	Double Garage Attached, Off Street
# of Garages	2

Interior

Interior Features	Central Vacuum, Granite Counters, Kitchen Island, Open Floorplan, Vaulted Ceiling(s), Walk-In Closet(s)
Appliances	Dishwasher, Electric Oven, Microwave, Refrigerator, Washer/Dryer
Heating	Forced Air
Cooling	None
Fireplace	Yes
# of Fireplaces	1
Fireplaces	Gas
Has Basement	Yes
Basement	Full, Partially Finished

Exterior

Exterior Features	BBQ gas line
Lot Description	See Remarks
Roof	Asphalt Shingle
Construction	Vinyl Siding, Wood Frame
Foundation	Poured Concrete

Additional Information

Date Listed	June 17th, 2025
Days on Market	16
Zoning	R1-S

Listing Details

Listing Office	The Agency North Central Alberta
----------------	----------------------------------

Data is supplied by Pillar 9â„¢ MLS® System. Pillar 9â„¢ is the owner of the copyright in its MLS® System. Data is deemed reliable but is not guaranteed accurate by Pillar 9â„¢. The trademarks MLS®, Multiple Listing Service® and the associated logos are owned by The Canadian Real Estate Association (CREA) and identify the quality of services provided by real estate professionals who are members of CREA. Used under license.