

\$219,000 - Range Road 7-2, Rural Clearwater County

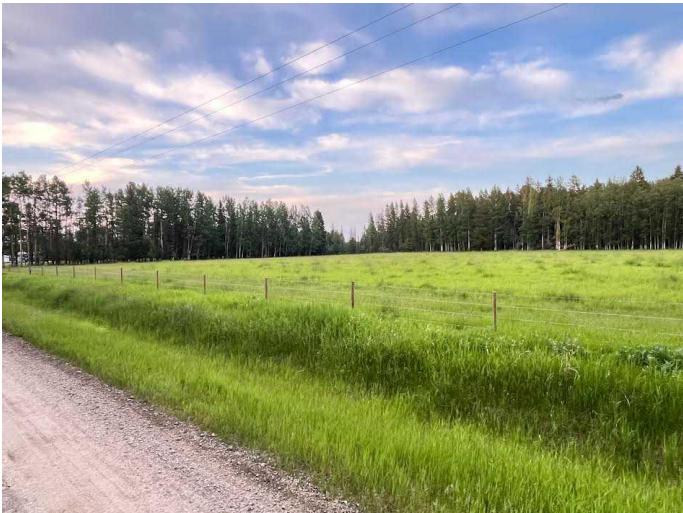
MLS® #A2231460

\$219,000

0 Bedroom, 0.00 Bathroom,
Land on 4.99 Acres

NONE, Rural Clearwater County, Alberta

Escape the hustle and build your dream on this 4.99-acre parcel tucked away on a quiet dead-end road. Just 15 minutes from town, this blank slate offers the perfect blend of privacy and convenience. With no utilities currently on site, services are nearby, making this an ideal opportunity to shape your own vision from the ground up. Whether youâ€™re dreaming of a country home, hobby farm, or a weekend retreat, the possibilities are wide open.



Essential Information

MLS® #	A2231460
Price	\$219,000
Bathrooms	0.00
Acres	4.99
Type	Land
Sub-Type	Residential Land
Status	Active

Community Information

Address	Range Road 7-2
Subdivision	NONE
City	Rural Clearwater County
County	Clearwater County
Province	Alberta
Postal Code	T4T 1A3

Additional Information

Date Listed	June 16th, 2025
Days on Market	64
Zoning	CRA

Listing Details

Listing Office	Royal LePage Tamarack Trail Realty
----------------	------------------------------------

Data is supplied by Pillar 9â„¢ MLS® System. Pillar 9â„¢ is the owner of the copyright in its MLS® System. Data is deemed reliable but is not guaranteed accurate by Pillar 9â„¢. The trademarks MLS®, Multiple Listing Service® and the associated logos are owned by The Canadian Real Estate Association (CREA) and identify the quality of services provided by real estate professionals who are members of CREA. Used under license.