

# \$384,900 - 14 Ovington Close, Red Deer

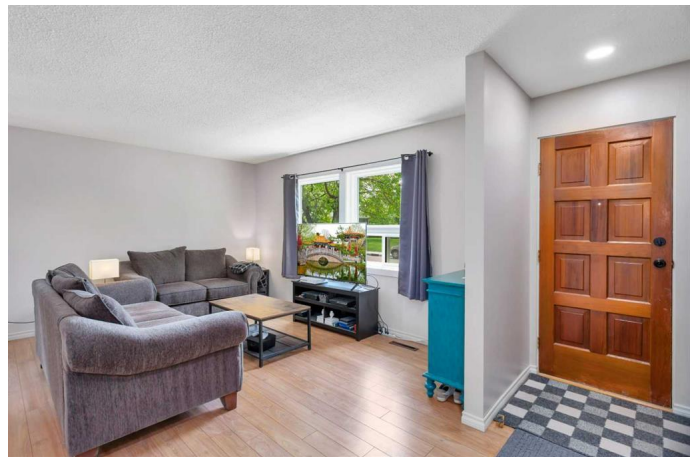
MLS® #A2228050

## \$384,900

3 Bedroom, 2.00 Bathroom, 1,083 sqft  
Residential on 0.15 Acres

Oriole Park, Red Deer, Alberta

Pretty updated bungalow with a BRAND NEW 22x24 Garage on quiet close in Oriole Park. Welcome to 14 Ovington Close! Located on a pretty close, this home has lovely curb appeal. Tucked back with some mature trees and plenty of sunlight, this home welcomes you! Stepping in, you are greeted with a spacious kitchen and dining room. With neutral flooring and light walls, this home is fresh and inviting. The dining room is well lit and opens to the NEW kitchen! With gorgeous white cabinetry, a dark butcher block top, stainless steel appliances, a handy pantry AND a large window facing your private landscaped yard! The adjacent hallway leads you to three good sized additional bedrooms, and a freshly updated 4 piece bath. The two front bedrooms have large south facing window, and the primary bedroom faces the yard. Access to the basement and backyard are off the kitchen. The basement is very spacious and cozy and is anchored by a whitewashed electric fireplace! There is an office (window does not meet egress as a bedroom), a renovated 3 piece bathroom, a laundry/ mechanical room and a HUGE storage room. With an established neighbourhood such as Oriole Park, you get the lovely mature yards with big trees & Shrubs. With a sweet ground level patio, a shrub & flower garden, plenty of lawn and a garden shed, there is so much room to enjoy the outdoors! The BRAND NEW fully finished (March 2025) garage offers plenty of work & storage space, an electric heater



AND 10' CEILINGS. There is also RV Parking. This home has BRAND NEW WINDOWS throughout and siding in 2025. The kitchen was completely redone in 2024 along with the downstairs bathroom. There is also plenty of fresh paint and small updates throughout. There is an Elementary school within walking distance as well as numerous parks and playgrounds. Highway 2 access is only 5 minutes away.Â With so many fresh updates, this home offers incredible value in a great location.

Built in 1972

**Essential Information**

MLS® #	A2228050
Price	\$384,900
Bedrooms	3
Bathrooms	2.00
Full Baths	2
Square Footage	1,083
Acres	0.15
Year Built	1972
Type	Residential
Sub-Type	Detached
Style	Bungalow
Status	Active

**Community Information**

Address	14 Ovington Close
Subdivision	Oriole Park
City	Red Deer
County	Red Deer
Province	Alberta
Postal Code	T4H5J3

**Amenities**

Parking Spaces	2
Parking	Double Garage Detached

# of Garages 2

### Interior

Interior Features Closet Organizers, Vinyl Windows  
Appliances Dishwasher, Refrigerator, Stove(s), Washer/Dryer  
Heating Forced Air  
Cooling None  
Fireplace Yes  
# of Fireplaces 1  
Fireplaces Basement, Electric  
Has Basement Yes  
Basement Finished, Full

### Exterior

Exterior Features Garden  
Lot Description Back Lane, Back Yard, Front Yard, Lawn, Many Trees  
Roof Asphalt Shingle  
Construction Wood Frame  
Foundation Poured Concrete

### Additional Information

Date Listed June 5th, 2025  
Days on Market 12  
Zoning R1

### Listing Details

Listing Office Royal LePage Network Realty Corp.

Data is supplied by Pillar 9â„¢ MLSÂ® System. Pillar 9â„¢ is the owner of the copyright in its MLSÂ® System. Data is deemed reliable but is not guaranteed accurate by Pillar 9â„¢. The trademarks MLSÂ®, Multiple Listing ServiceÂ® and the associated logos are owned by The Canadian Real Estate Association (CREA) and identify the quality of services provided by real estate professionals who are members of CREA. Used under license.