

\$799,900 - 37533 Range Road 241, Rural Red Deer County

MLS® #A2226513

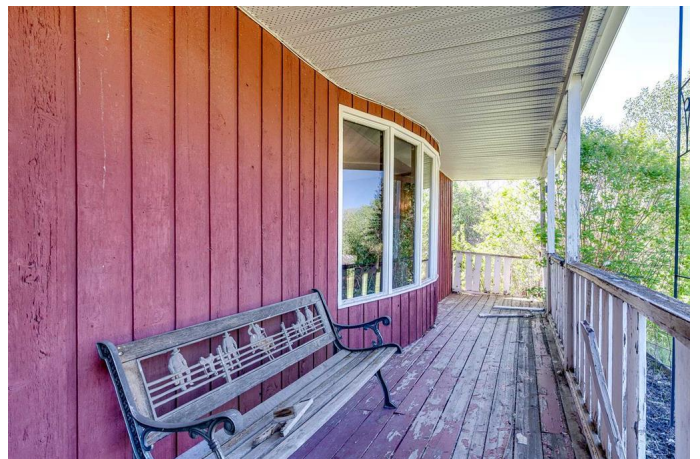
\$799,900

4 Bedroom, 2.00 Bathroom, 1,858 sqft
Residential on 29.65 Acres

NONE, Rural Red Deer County, Alberta

Welcome to this stylish 2 storey home located on a gorgeous acreage setting. Main floor is living room, kitchen and dining room with a 2 piece bath and entry into the attached garage. Upstairs brings us the primary bedroom along with 3 more bedrooms as well as a 3 piece bath, and a storage room. The basement is not finished but includes laundry, a cold room, utility room and lots of storage. Over 1800 sq ft above grade. The 38' x 38' shop with 2 drive in doors, has underfloor heat roughed in, very modern looking built with tin exterior to last a lifetime. The barn / quonset is roughly 38 x 100 with 14' x 14' box stalls up front for horse pens and lots of storage in the back where they store hay bales for feed. Horse shelters, auto waterers for the animals and a 12 x 12 shed is included with out buildings. The water well is 12 years old, has a septic tank and pump out system. Upgrades are house shingled in 2023, furnace is only 10 years old, recent tankless hot water installed, and water softener. Many newer vinyl windows. A total of 29.65 acres with lots of room to pasture cattle or horses and a large home that shows well. Less than 1 km off of pavement and only 20 minutes to the edge of Red Deer. Come escape to the country, bring your horses and have hours of riding time on your own property.

Built in 1982



Essential Information

| | |
|----------------|----------------------------------|
| MLS® # | A2226513 |
| Price | \$799,900 |
| Bedrooms | 4 |
| Bathrooms | 2.00 |
| Full Baths | 1 |
| Half Baths | 1 |
| Square Footage | 1,858 |
| Acres | 29.65 |
| Year Built | 1982 |
| Type | Residential |
| Sub-Type | Detached |
| Style | 2 Storey, Acreage with Residence |
| Status | Active |

Community Information

| | |
|-------------|-----------------------|
| Address | 37533 Range Road 241 |
| Subdivision | NONE |
| City | Rural Red Deer County |
| County | Red Deer County |
| Province | Alberta |
| Postal Code | T0M 0V0 |

Amenities

| | |
|----------------|--------------------------------------------|
| Parking Spaces | 2 |
| Parking | Additional Parking, Double Garage Attached |
| # of Garages | 1 |

Interior

| | |
|-------------------|------------------------------------------------------------------------|
| Interior Features | Storage, Tankless Hot Water, Vinyl Windows, Wood Windows |
| Appliances | Dishwasher, Electric Stove, Refrigerator, Washer/Dryer, Water Softener |
| Heating | Forced Air, Natural Gas |
| Cooling | None |
| Fireplace | Yes |
| # of Fireplaces | 1 |
| Fireplaces | Living Room, None |
| Has Basement | Yes |
| Basement | Full, Unfinished |

Exterior

| | |
|-------------------|-------------------------|
| Exterior Features | Garden, Private Yard |
| Lot Description | Pasture, Treed |
| Roof | Asphalt Shingle |
| Construction | Wood Frame, Wood Siding |
| Foundation | Block |

Additional Information

| | |
|----------------|----------------|
| Date Listed | June 1st, 2025 |
| Days on Market | 80 |
| Zoning | AG |

Listing Details

| | |
|----------------|-----------------------------------|
| Listing Office | Royal LePage Network Realty Corp. |
|----------------|-----------------------------------|

Data is supplied by Pillar 9â„¢ MLS® System. Pillar 9â„¢ is the owner of the copyright in its MLS® System. Data is deemed reliable but is not guaranteed accurate by Pillar 9â„¢. The trademarks MLS®, Multiple Listing Service® and the associated logos are owned by The Canadian Real Estate Association (CREA) and identify the quality of services provided by real estate professionals who are members of CREA. Used under license.