

\$375,000 - 85 Thomlison Avenue, Red Deer

MLS® #A2225589

\$375,000

3 Bedroom, 3.00 Bathroom, 1,312 sqft
Residential on 0.08 Acres

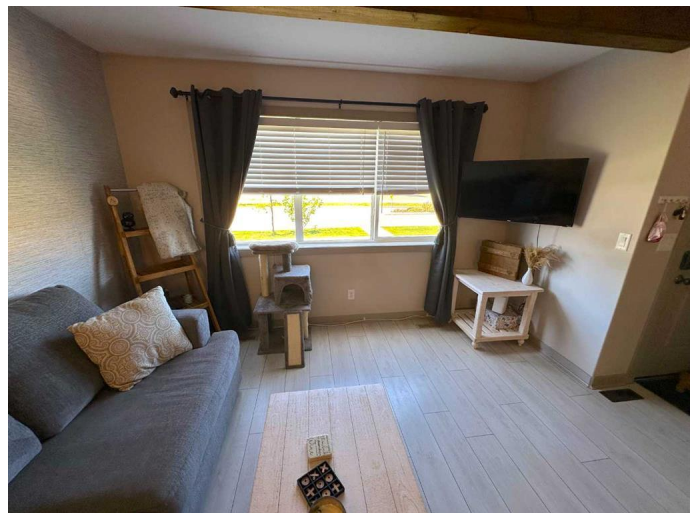
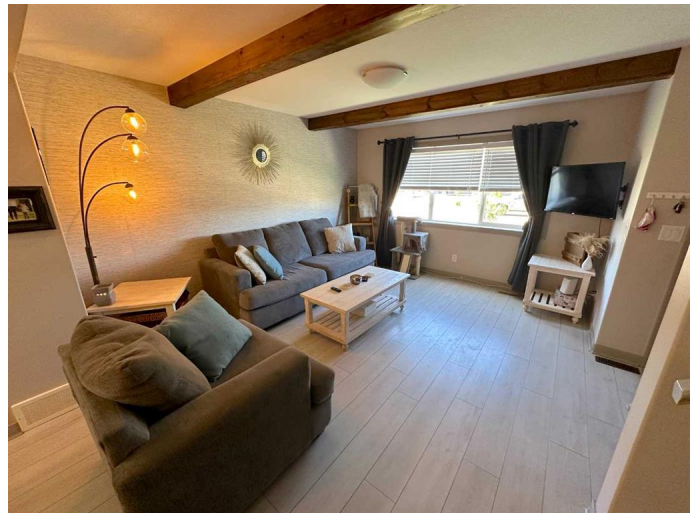
Timber Ridge, Red Deer, Alberta

Welcome to 85 Thomlison Avenue - Original Owners - An extremely well kept property boasting 3 bedroom and 3 bathrooms. The open concept main floor showcases beautiful laminate flooring, wooden ceiling beams, modern paint colours and a beautiful kitchen! The kitchen features dark cabinetry, stainless steel appliances, an island with seating and a great sized pantry. Just off to the side is a convenient 2 pc bathroom. From the dining area you can access the fully fenced & landscaped yard with a nice size deck perfect for those upcoming Summer gatherings with friends and family as well as additional parking or room for a future garage! Upstairs is home to the 3 bedrooms including the large master with it's own 4pc ensuite bathroom as well as the 4pc main bathroom. The undeveloped basement is wide open for your imagination. No condo fees and located in a great spot close to incredible amenities like the Red Deer trail system, shopping, schools and parks! A move-in ready home!

Built in 2015

Essential Information

MLS® #	A2225589
Price	\$375,000
Bedrooms	3
Bathrooms	3.00
Full Baths	2



Half Baths	1
Square Footage	1,312
Acres	0.08
Year Built	2015
Type	Residential
Sub-Type	Semi Detached
Style	2 Storey, Side by Side
Status	Active

Community Information

Address	85 Thomlison Avenue
Subdivision	Timber Ridge
City	Red Deer
County	Red Deer
Province	Alberta
Postal Code	T4P 0W3

Amenities

Parking Spaces	2
Parking	Off Street, Parking Pad

Interior

Interior Features	High Ceilings, Kitchen Island, Laminate Counters, No Smoking Home, Open Floorplan, Pantry, Vinyl Windows
Appliances	Dishwasher, Microwave, Refrigerator, Stove(s), Washer/Dryer
Heating	Forced Air
Cooling	None
Has Basement	Yes
Basement	Full, Unfinished

Exterior

Exterior Features	Private Yard
Lot Description	Back Lane, Back Yard, Landscaped, Rectangular Lot, Standard Shaped Lot
Roof	Asphalt Shingle
Construction	Wood Frame
Foundation	Poured Concrete

Additional Information

Date Listed	June 2nd, 2025
Days on Market	15
Zoning	R2

Listing Details

Listing Office	2 Percent Realty Advantage
----------------	----------------------------

Data is supplied by Pillar 9â„¢ MLSÂ® System. Pillar 9â„¢ is the owner of the copyright in its MLSÂ® System. Data is deemed reliable but is not guaranteed accurate by Pillar 9â„¢. The trademarks MLSÂ®, Multiple Listing ServiceÂ® and the associated logos are owned by The Canadian Real Estate Association (CREA) and identify the quality of services provided by real estate professionals who are members of CREA. Used under license.