

\$474,900 - 31 Eldridge Crescent, Red Deer

MLS® #A2217793

\$474,900

4 Bedroom, 4.00 Bathroom, 1,567 sqft

Residential on 0.13 Acres

Eastview, Red Deer, Alberta

Spacious family home on a quiet crescent! This 2 storey family home offers a functional layout with room to grow, featuring a large living area, basement flex room currently optimized for a gym but also perfect for an office, and a beautiful sunroom filled with natural light. Nestled in a mature, family-friendly neighborhood close to parks, schools, and amenities. A must-see for buyers seeking space, comfort, and a peaceful location!

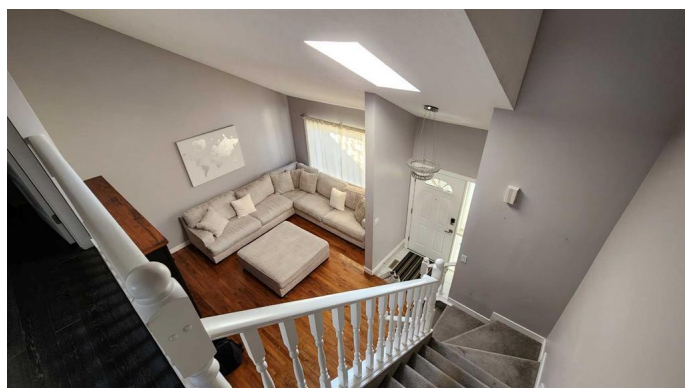
Built in 1987

Essential Information

| | |
|----------------|-------------|
| MLS® # | A2217793 |
| Price | \$474,900 |
| Bedrooms | 4 |
| Bathrooms | 4.00 |
| Full Baths | 3 |
| Half Baths | 1 |
| Square Footage | 1,567 |
| Acres | 0.13 |
| Year Built | 1987 |
| Type | Residential |
| Sub-Type | Detached |
| Style | 2 Storey |
| Status | Active |

Community Information

Address 31 Eldridge Crescent



| | |
|-------------|----------|
| Subdivision | Eastview |
| City | Red Deer |
| County | Red Deer |
| Province | Alberta |
| Postal Code | T4R 2C9 |

Amenities

| | |
|----------------|------------------------|
| Parking Spaces | 4 |
| Parking | Double Garage Attached |
| # of Garages | 2 |

Interior

| | |
|-------------------|---|
| Interior Features | See Remarks |
| Appliances | Dishwasher, Refrigerator, See Remarks, Washer/Dryer, Oven |
| Heating | Forced Air, Natural Gas |
| Cooling | None |
| Fireplace | Yes |
| # of Fireplaces | 1 |
| Fireplaces | Wood Burning |
| Has Basement | Yes |
| Basement | Finished, Full |

Exterior

| | |
|-------------------|--|
| Exterior Features | Garden, Other |
| Lot Description | Back Lane, Back Yard, City Lot, Garden, Landscaped, Other, See Remarks |
| Roof | Asphalt Shingle |
| Construction | See Remarks |
| Foundation | Wood, Other |

Additional Information

| | |
|----------------|---------------|
| Date Listed | May 5th, 2025 |
| Days on Market | 6 |
| Zoning | R1 |

Listing Details

| | |
|----------------|------------------------|
| Listing Office | Royal LePage Benchmark |
|----------------|------------------------|

Data is supplied by Pillar 9â„¢ MLSÂ® System. Pillar 9â„¢ is the owner of the copyright in its MLSÂ® System. Data is deemed reliable but is not guaranteed accurate by Pillar 9â„¢. The trademarks MLSÂ®, Multiple Listing ServiceÂ® and the associated logos are owned by The Canadian Real Estate Association (CREA) and identify the quality of services

provided by real estate professionals who are members of CREA. Used under license.