

\$520,000 - 50 Cole Way, Sylvan Lake

MLS® #A2128590

\$520,000

5 Bedroom, 3.00 Bathroom, 1,178 sqft
Residential on 0.10 Acres

Crestview, Sylvan Lake, Alberta

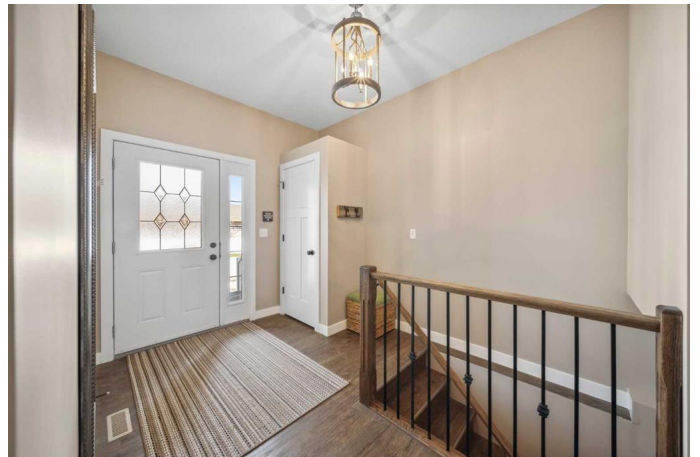
Welcome to this meticulously designed bungalow nestled in a serene neighborhood, where every aspect has been carefully curated to offer comfort and convenience.

Upon entering, you'll be greeted by a spacious foyer, hinting at the expansive layout that awaits. The living room beckons with its inviting gas fireplace, providing the perfect ambiance for relaxation. Durable vinyl plank flooring spans the entirety of the home, marrying style with durability.

The kitchen is a culinary haven, featuring a fully tiled backsplash and upgraded pot drawers on the island, adding both sophistication and functionality. Modern amenities include a newer fridge and a whisper-quiet dishwasher, enhancing the efficiency of daily tasks.

The primary bedroom boasts a walk-in closet with custom built-ins, accompanied by a second smaller closet and a luxurious 3-piece bathroom. Additionally, the main floor encompasses two more bedrooms, one of which could easily transition into a home office, as well as a guest bath and a convenient laundry room offering additional storage space.

Descending to the lower level, you'll discover a spacious family room, ideal for entertaining or quiet evenings at home. Two generously sized



basement bedrooms, each featuring step-in closets, ensure privacy and comfort for guests or family members.

Additional amenities include central air conditioning for year-round comfort, in-floor heating in the basement for added coziness, and a water softener ensuring pristine water quality throughout the home.

Outside, the covered patio with epoxy flooring and pergola provides a tranquil retreat, offering privacy and sunshade while overlooking the lush green space beyond the yard. The fully fenced yard, enclosed with vinyl fencing, ensures both security and serenity.

With a double heated garage and a sizable basement storage room, this home offers ample space to accommodate all your belongings. Don't miss this opportunity to make this stunning property your forever home!

Built in 2015

Essential Information

MLS® #	A2128590
Price	\$520,000
Bedrooms	5
Bathrooms	3.00
Full Baths	3
Square Footage	1,178
Acres	0.10
Year Built	2015
Type	Residential
Sub-Type	Detached
Style	Bungalow
Status	Active

Community Information

Address	50 Cole Way
Subdivision	Crestview
City	Sylvan Lake
County	Red Deer County
Province	Alberta
Postal Code	T4S 0L5

Amenities

Parking Spaces	4
Parking	Concrete Driveway, Double Garage Attached, Heated Garage
# of Garages	2

Interior

Interior Features	Closet Organizers, Vinyl Windows, Kitchen Island, Open Floorplan, Pantry, Walk-In Closet(s)
Appliances	Bar Fridge, Dishwasher, Garage Control(s), Microwave Hood Fan, Refrigerator, Stove(s), Washer/Dryer, Window Coverings
Heating	Forced Air, Natural Gas
Cooling	Central Air
Fireplace	Yes
# of Fireplaces	1
Fireplaces	Gas, Living Room, Tile
Has Basement	Yes
Basement	Finished, Full

Exterior

Exterior Features	Private Yard
Lot Description	Backs on to Park/Green Space, No Neighbours Behind, Private
Roof	Asphalt Shingle
Construction	Stone, Vinyl Siding
Foundation	Poured Concrete

Additional Information

Date Listed	April 3rd, 2025
Days on Market	32
Zoning	R5

Listing Details

Listing Office	RE/MAX real estate central alberta
----------------	------------------------------------

Data is supplied by Pillar 9â„¢ MLS® System. Pillar 9â„¢ is the owner of the copyright in its MLS® System. Data is deemed reliable but is not guaranteed accurate by Pillar 9â„¢. The trademarks MLS®, Multiple Listing Service® and the associated logos are owned by The Canadian Real Estate Association (CREA) and identify the quality of services provided by real estate professionals who are members of CREA. Used under license.